

SOMYA



Sky Elite



2/3 BHK Premium Residences

The ultimate living experience



A life with all things ultimate

LOCATION

LIFESTYLE

AMENITIES

PLANNING

SPECIFICATIONS

THE ULTIMATE LOCATION THAT
TAKES YOU EVERYWHERE WITH EASE

For that effortless commute

Jagatpura, which is Jaipur's growing hub, is getting its newest and ultimate project, Sky Elite. The decision to choose this location was made to offer you the best connectivity possible to all the prominent places and also so you could enjoy easy transportation facilities. All the renowned universities and colleges are nestled near and around Sky Elite, along with Jaipur International Airport and the best entertainment centers, restaurants, and hospitals. Live the ultimate life away from the city's hustle with an easy approach to all the places.



THE ULTIMATE
LIFESTYLE THAT LETS
YOU SEE THE OTHER
SIDE OF LIFE

SOMYA
Sky Elite

2/3 BHK Premium Residences

Well Secured Entrance

Ample Parking

Community Hall

Landscaped Garden

Gym Home Theatre

Swimming Pool

Indoor Games

CLUB HOUSE



THE ULTIMATE POOL
TO SPLASH AWAY THE STRESS
AND FLOAT THROUGH CALM

For that refreshing dip

If you find yourself sitting around wondering what you should do, the gorgeously designed swimming pool is where you should head. It is the ultimate relaxing spot. Even if you don't feel like swimming, you can always sit beside it with a friend or read your favorite book while dipping your feet in the pool.

SWIMMING POOL



THE ULTIMATE GYM TO STAY HEALTHY AND GET GOING

For that active lifestyle

In today's world, it is vital to keep our bodies healthy with an energy that is always active and doesn't get tired easily. Our motto in building a well-equipped gym is to prompt you to start working out as per your desired requirement and jump on the bandwagon of fitness enthusiasts to stay ahead in the game of an active and healthy lifestyle.

MODERN GYMNASIUM



THE ULTIMATE INDULGENCE
TO UNWIND WITH FRIENDS
AND LAUGHTER

For that entertainment in life

Whether you are in a 9-to-5 job or a stay-at-home partner, everybody needs some entertainment to unwind, and that's why our well-equipped home theater is designed to let you catch your favorite movie without having to go far. Life here doesn't get mundane, as you have a variety of indoor games to choose from and end your day with an uplifting game with your friends or family.

HOME THEATRE



INDOOR GAMES



THE ULTIMATE
ARCHITECTURE
THAT TAKES YOUR
LIFE UP A NOTCH



Our upscale apartments provide an unmatched degree of sophistication and refinement. Each unit has been meticulously built with a healthy balance between form and function in mind. As soon as you enter, you'll find yourself in a roomy, bright living space with high ceilings and huge windows that provide stunning views of the neighborhood's skyline. The creative layout effortlessly combines the living, dining, and kitchen spaces to create the perfect setting for hosting guests or just unwinding with family.



LIBRARY

It's a paradise for book lovers who never go a day without reading.



COMMUNITY HALL

Host your special occasions or meetings in our appealing community hall





DRAWING ROOM



WASHROOM



MODULAR KITCHEN



BEDROOM



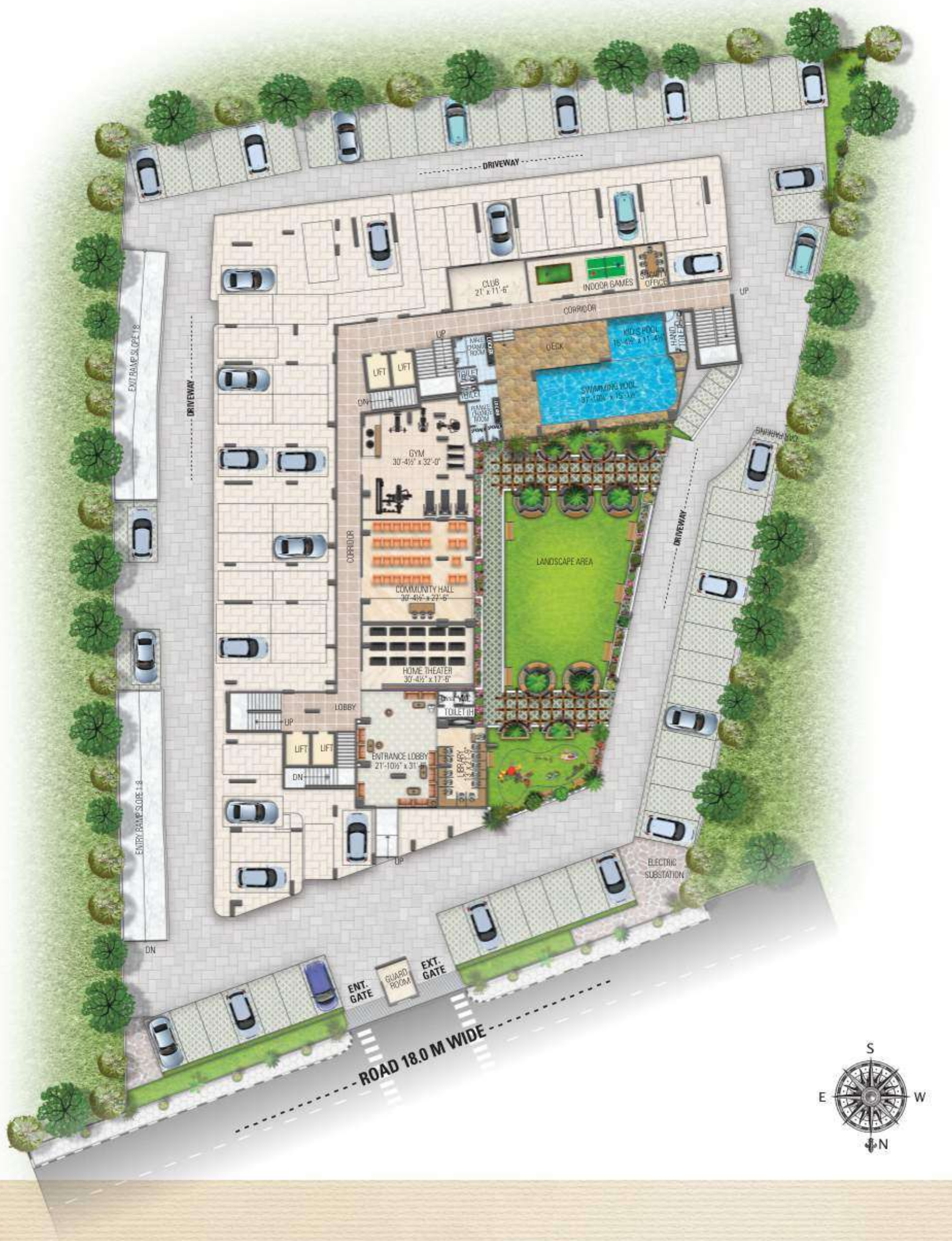
BALCONY



KIDS ROOM

THE ULTIMATE LIVING IN AIRY SPACES
WITH A MIX OF UNMATCHED LUXURY





STILT FLOOR PLAN

Disclaimer: These plans are for representational purpose only and do not constitute any promise by the Developer nor does it create any contractual obligation on part of the Developer. Internal dimensions mentioned are from brick to brick and balcony dimensions are up to the outer edge of the balcony slab. Marginal difference may also occur during construction. The Built Up Area and Super Built Up Area mentioned therein is only for the purpose of comparison with similar product in the industry.



AREA STATEMENT

Flat No.	Unit Type	Built-Up Area (In Sq. ft.)	Carpet Area (In Sq. ft.)	Balcony Area (In Sq. ft.)	Sale Area (In Sq. ft.)
01	4 BHK	1502.71	1283.71	168.03	2090
02	4 BHK	1596.83	1323.76	221.52	2220
03	3 BHK	1113.34	949.71	120.77	1550
04	3 BHK	1068.48	929.04	95.91	1490
05	3 BHK	1051.48	917.95	89.99	1460
06	3 BHK	984.92	837.22	99.46	1370
07	3 BHK	1083.26	942.71	94.51	1500
08	3 BHK	1022.48	885.02	93.97	1420
09	3 BHK	1098.76	933.02	121.96	1530
10	3 BHK	1063.21	922.37	93.97	1480
11	2 BHK	811.61	670.38	101.83	1130
12	2 BHK	825.8	687.39	105.49	1150
14	2 BHK	786.27	667.37	78.25	1090
15	2 BHK	802.4	683.41	78.25	1110

TYPICAL (2nd to 11th) FLOOR PLAN

Disclaimer: These plans are for representational purpose only and do not constitute any promise by the Developer nor does it create any contractual obligation on part of the Developer. Internal dimensions mentioned are from brick to brick and balcony dimensions are up to the outer edge of the balcony slab. Marginal difference may also occur during construction. The Built Up Area and Super Built Up Area mentioned therein is only for the purpose of comparison with similar product in the industry.

THE ULTIMATE AMENITIES THAT BRING YOU CLOSER TO A PEACEFUL LIFESTYLE

For that unforgettable moments

Living a harmonious life requires a home where you can indulge in recreational activities and have a good time creating lifelong memories with your family and friends. That is why amenities at Sky Elite are carefully handpicked to offer you the best entertainment there is for you to relax and live a stress-free life.





Carpet Area - **1283.71** | Built-up Area - **1502.71** | Balcony Area - **168.03** | SALE AREA - **2090** Sq.ft.



Flat No. 1 | 4 BHK

UNIT TYPE-1

Disclaimer: These plans are for representational purpose only and do not constitute any promise by the Developer nor does it create any contractual obligation on part of the Developer. Internal dimensions mentioned are from brick to brick and balcony dimensions are up to the outer edge of the balcony slab. Marginal difference may also occur during construction. The Built Up Area and Super Built Up Area mentioned therein is only for the purpose of comparison with similar product in the industry.



Carpet Area - **1323.76** | Built-up Area - **1596.83** | Balcony Area - **221.52** | SALE AREA - **2220** Sq.ft.



Flat No. 2 | 4 BHK

UNIT TYPE-2

Disclaimer: These plans are for representational purpose only and do not constitute any promise by the Developer nor does it create any contractual obligation on part of the Developer. Internal dimensions mentioned are from brick to brick and balcony dimensions are up to the outer edge of the balcony slab. Marginal difference may also occur during construction. The Built Up Area and Super Built Up Area mentioned therein is only for the purpose of comparison with similar product in the industry.



Carpet Area - **949.71** | Built-up Area - **1113.34** | Balcony Area - **120.77** | SALE AREA - **1550** Sq.ft.



Flat No. 3 | 3 BHK

UNIT TYPE-3

Disclaimer: These plans are for representational purpose only and do not constitute any promise by the Developer nor does it create any contractual obligation on part of the Developer. Internal dimensions mentioned are from brick to brick and balcony dimensions are up to the outer edge of the balcony slab. Marginal difference may also occur during construction. The Built Up Area and Super Built Up Area mentioned therein is only for the purpose of comparison with similar product in the industry.



Carpet Area - **929.04** | Built-up Area - **1068.48** | Balcony Area - **95.91** | SALE AREA - **1490** Sq.ft.



Flat No. 4 | 3 BHK

UNIT TYPE-4

Disclaimer: These plans are for representational purpose only and do not constitute any promise by the Developer nor does it create any contractual obligation on part of the Developer. Internal dimensions mentioned are from brick to brick and balcony dimensions are up to the outer edge of the balcony slab. Marginal difference may also occur during construction. The Built Up Area and Super Built Up Area mentioned therein is only for the purpose of comparison with similar product in the industry.



Carpet Area - **917.95** | Built-up Area - **1051.48** | Balcony Area - **89.99** | SALE AREA - **1460** Sq.ft.



Carpet Area - **837.22** | Built-up Area - **984.92** | Balcony Area - **99.46** | SALE AREA - **1370** Sq.ft.



Flat No. 5 | 3 BHK

UNIT TYPE-5

Disclaimer: These plans are for representational purpose only and do not constitute any promise by the Developer nor does it create any contractual obligation on part of the Developer. Internal dimensions mentioned are from brick to brick and balcony dimensions are up to the outer edge of the balcony slab. Marginal difference may also occur during construction. The Built Up Area and Super Built Up Area mentioned therein is only for the purpose of comparison with similar product in the industry.



Flat No. 6 | 3 BHK

UNIT TYPE-6

Disclaimer: These plans are for representational purpose only and do not constitute any promise by the Developer nor does it create any contractual obligation on part of the Developer. Internal dimensions mentioned are from brick to brick and balcony dimensions are up to the outer edge of the balcony slab. Marginal difference may also occur during construction. The Built Up Area and Super Built Up Area mentioned therein is only for the purpose of comparison with similar product in the industry.



Carpet Area - **942.71** | Built-up Area - **1083.26** | Balcony Area - **94.51** | SALE AREA - **1500** Sq.ft.



Flat No. 7 | 3 BHK

UNIT TYPE-7

Disclaimer: These plans are for representational purpose only and do not constitute any promise by the Developer nor does it create any contractual obligation on part of the Developer. Internal dimensions mentioned are from brick to brick and balcony dimensions are up to the outer edge of the balcony slab. Marginal difference may also occur during construction. The Built Up Area and Super Built Up Area mentioned therein is only for the purpose of comparison with similar product in the industry.



Carpet Area - **885.02** | Built-up Area - **1022.48** | Balcony Area - **93.97** | SALE AREA - **1420** Sq.ft.



Flat No. 8 | 3 BHK

UNIT TYPE-8

Disclaimer: These plans are for representational purpose only and do not constitute any promise by the Developer nor does it create any contractual obligation on part of the Developer. Internal dimensions mentioned are from brick to brick and balcony dimensions are up to the outer edge of the balcony slab. Marginal difference may also occur during construction. The Built Up Area and Super Built Up Area mentioned therein is only for the purpose of comparison with similar product in the industry.



Carpet Area - **933.02** | Built-up Area - **1098.76** | Balcony Area - **121.96** | SALE AREA - **1530** Sq.ft.



Flat No. 9 | 3 BHK

UNIT TYPE-9

Disclaimer: These plans are for representational purpose only and do not constitute any promise by the Developer nor does it create any contractual obligation on part of the Developer. Internal dimensions mentioned are from brick to brick and balcony dimensions are up to the outer edge of the balcony slab. Marginal difference may also occur during construction. The Built Up Area and Super Built Up Area mentioned therein is only for the purpose of comparison with similar product in the industry.



Carpet Area - **922.37** | Built-up Area - **1063.21** | Balcony Area - **93.97** | SALE AREA - **1480** Sq.ft.



Flat No. 10 | 3 BHK

UNIT TYPE-10

Disclaimer: These plans are for representational purpose only and do not constitute any promise by the Developer nor does it create any contractual obligation on part of the Developer. Internal dimensions mentioned are from brick to brick and balcony dimensions are up to the outer edge of the balcony slab. Marginal difference may also occur during construction. The Built Up Area and Super Built Up Area mentioned therein is only for the purpose of comparison with similar product in the industry.



Carpet Area - **670.38** | Built-up Area - **811.61** | Balcony Area - **101.83** | SALE AREA - **1130** Sq.ft.



Flat No. 11 | 2 BHK

UNIT TYPE-11

Disclaimer: These plans are for representational purpose only and do not constitute any promise by the Developer nor does it create any contractual obligation on part of the Developer. Internal dimensions mentioned are from brick to brick and balcony dimensions are up to the outer edge of the balcony slab. Marginal difference may also occur during construction. The Built Up Area and Super Built Up Area mentioned therein is only for the purpose of comparison with similar product in the industry.



Carpet Area - **687.39** | Built-up Area - **825.8** | Balcony Area - **105.49** | SALE AREA - **1150** Sq.ft.



Flat No. 12 | 2 BHK

UNIT TYPE-12

Disclaimer: These plans are for representational purpose only and do not constitute any promise by the Developer nor does it create any contractual obligation on part of the Developer. Internal dimensions mentioned are from brick to brick and balcony dimensions are up to the outer edge of the balcony slab. Marginal difference may also occur during construction. The Built Up Area and Super Built Up Area mentioned therein is only for the purpose of comparison with similar product in the industry.



Carpet Area - **667.37** | Built-up Area - **786.27** | Balcony Area - **78.25** | SALE AREA - **1090** Sq.ft.



Flat No. 14 | 2 BHK

UNIT TYPE-14

Disclaimer: These plans are for representational purpose only and do not constitute any promise by the Developer nor does it create any contractual obligation on part of the Developer. Internal dimensions mentioned are from brick to brick and balcony dimensions are up to the outer edge of the balcony slab. Marginal difference may also occur during construction. The Built Up Area and Super Built Up Area mentioned therein is only for the purpose of comparison with similar product in the industry.



Carpet Area - **683.41** | Built-up Area - **802.4** | Balcony Area - **78.25** | SALE AREA - **1110** Sq.ft.



Flat No. 15 | 2 BHK

UNIT TYPE-15

Disclaimer: These plans are for representational purpose only and do not constitute any promise by the Developer nor does it create any contractual obligation on part of the Developer. Internal dimensions mentioned are from brick to brick and balcony dimensions are up to the outer edge of the balcony slab. Marginal difference may also occur during construction. The Built Up Area and Super Built Up Area mentioned therein is only for the purpose of comparison with similar product in the industry.

THE ULTIMATE LIVING
IN AIRY SPACES WITH A MIX OF
UNMATCHED LUXURY



Salient Features

WALL FINISH

Internal
Putty of reputed brand
External
Exquisitely designed exterior, finished in Texture paint

FLOORING

Drawing/Dinning/Bedrooms Vitrified

TOILET

Walls
Designer Ceramic tiles upto 7' height
Flooring
Good quality Ceramic tiles
Fittings
WC & Wash basin in all toilets, Provision for hot & cold water supply

KITCHEN

Flooring Vitrified
Platform
Working platform in black granite, stainless steel sink and provision for hot & cold water supply

Wall

2' Ceramic tiles dado above working platform with provision for electric chimney above the platform & point for aqua guard

GENERAL

Prime & Peaceful Location of Jaipur, Adequate Car Parking. Stone Chowkhat for doors & windows, Glass Shutters for windows, Moulded Doors & Designer Main Door

ELECTRICAL

Fittings
Modular electrical switches
Wiring
All copper wiring in concealed conduits, Adequate No. of Sockets, Lights, Fans. Provision for Inverter.

WATER SUPPLY

Water distribution in the complex through overhead & underground tank & Borewell

GENERATOR

Power backup for common areas, water pump & Lift etc.
Telephone/Dish/Computer
Points in all rooms at appropriate Place

LIFT

Automatic lift

STAIRCASE

Granite stone with SS Railing

OTHER FACILITIES

Washing machine point with water inlet & outlet at all convenient location

STRUCTURE

Earthquake resistant RCC frame Structure as per the design of structural consultant.

SECURITY

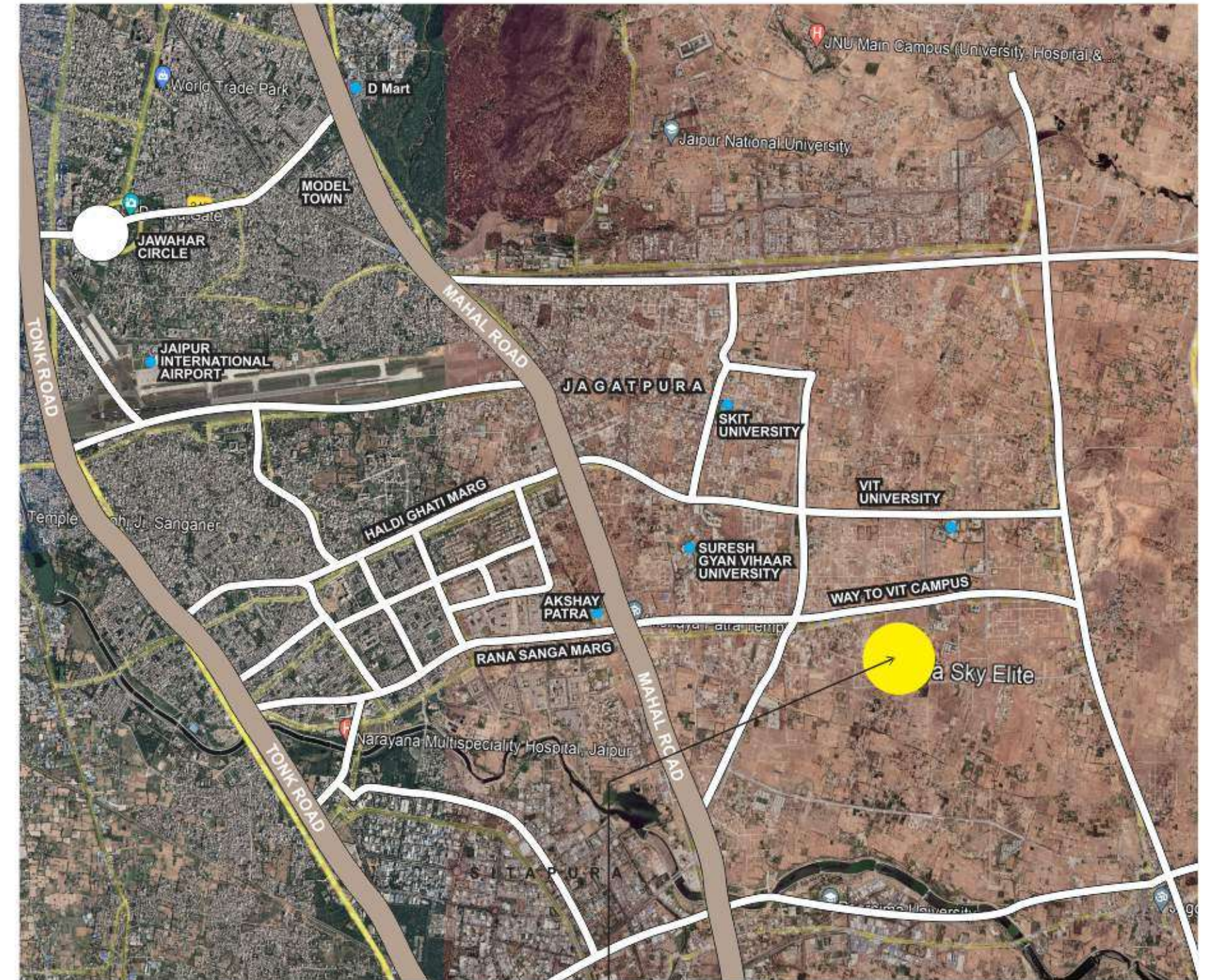
24 hour security

ULTIMATE FEATURES FOR
A LAVISH LIFESTYLE

IT'S TIME TO EXPERIENCE THE
ULTIMATE LIFE AT SKY ELITE



Location Plan



2/3 BHK Premium Residences

DISTANCE CHART

EDUCATION

Poddar School	5 Km
Poomima University	6.5 Km
Maharaj Sawai Bhawani Singh School	4 Km
Jagore Public School	4 Km
Mahatma Gandhi College of Education	9 Km
JNU University	9 Km

HEALTH

Star Hospital	8.5 Km
Jeevan Rekha Hospital	3 Km
Eternal Multi speciality Hospital	11 Km
Bombay Hospital	5 Km
Shri Hospital	8.5 Km
JNU Hospital	9 Km

ENTERTAINMENT

First Cinema	13 Km
Miraj Cinema	13 Km
Inox JTM Mall	8 Km
The Galaxy	11 Km
Inox GT Central	12 Km
Emerald	9 Km
Cinepolis	12 Km

LIFESTYLE

Viva City Mall	3 Km
Capital Mall	4 Km
Maharana Pratap Shopping Market	4.5 Km
Vaishnavi Tower	4.5 Km
Green Park	2 Km
Commercial	2 Km

SCAN QR FOR LOCATION



THE GROUP



SOMYA BUILDCON

Somya Build home is a very well establish name in real estate in Jaipur. A group started by young and energetic people more than 12 years back, with a vision to develop properties We get our projects designed by best of architects and planners with utmost care and intelligence. The group has completed many residential apartments, Villas and Independent with best quality construction, on time delivery with all concerned government departments. houses projects in the past in Jaipur with many more projects in the pipeline. Our Motto is not just selling concrete real estate to customers but to create a big family of happy and satisfied people providing them full value of their trust and money invested in our company. we are committed towards building & developing world class projects for you always.

SOME OF OUR COMPLETED PROJECTS



SOMYA SKY CROWN | Jagatpura, Jaipur



SOMYA SKY LEGEND | Jagatpura, Jaipur



SOMYA SKY CREST | Jagatpura, Jaipur



SOMYA SKY RISE | Jagatpura, Jaipur



SOMYA SKY-5 | Jagatpura, Jaipur



SOMYA SKY VISION | Jagatpura, Jaipur



SOMYABUILDHOME

63/66, Riddhi Siddhi Enclave,
Jagatpura, Jaipur

For Details Call :
+91 78778 88878

Architect
**SPACE
GRID**
ARCHITECTS

C-49, (B-6) Vidya Apartment,
Paras Marg, Bapu Nagar, Jaipur
Ph 0141-4005506 (O) 9314918766
Email: info.spacegrid@gmail.com

Disclaimer: This printed material does not constitute any form of agreement and all the purchases shall solely be governed by the terms of the agreement for sale. All finishes are subject to change at the discretion of the Developer and / or the Architects. The images used in this brochure are for illustration purpose only whereas the rendered images are close to actual.